



# INDOFINE Chemical Company, Inc.

121 Stryker Lane, Bldg. 30, Suite 1 • Hillsborough, NJ 08844 • U.S.A.

Phone: (908) 359-6778 • FAX: (908) 359-1179

website: [www.indofinechemical.com](http://www.indofinechemical.com)

e-mail: [chemical@indofinechemical.com](mailto:chemical@indofinechemical.com)

## CERTIFICATE OF ANALYSIS

**Cat No.: 021328**

Product: **IPRIFLAVONE**  
(7-Isopropoxyisoflavone)

CAS Number: [35212-22-7]

Lot Number: 0804014

Chemical Formula: C<sub>18</sub>H<sub>16</sub>O<sub>3</sub>

Molecular Weight: 280.33

Melting Point: 115-117°C

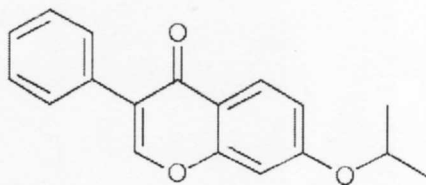
Appearance: White crystalline powder

TLC: Hexane:Ethyl acetate (7:3)

Solubility: Soluble in chloroform

Storage: Cool dry place

Purity (HPLC): 99.87%





# INDOFINE Chemical Company, Inc.

121 Stryker Lane, Bldg. 30, Suite 1 • Hillsborough, NJ 08844 • U.S.A.

Phone: (908) 359-6778 • FAX: (908) 359-1179

website: [www.indofinechemical.com](http://www.indofinechemical.com)

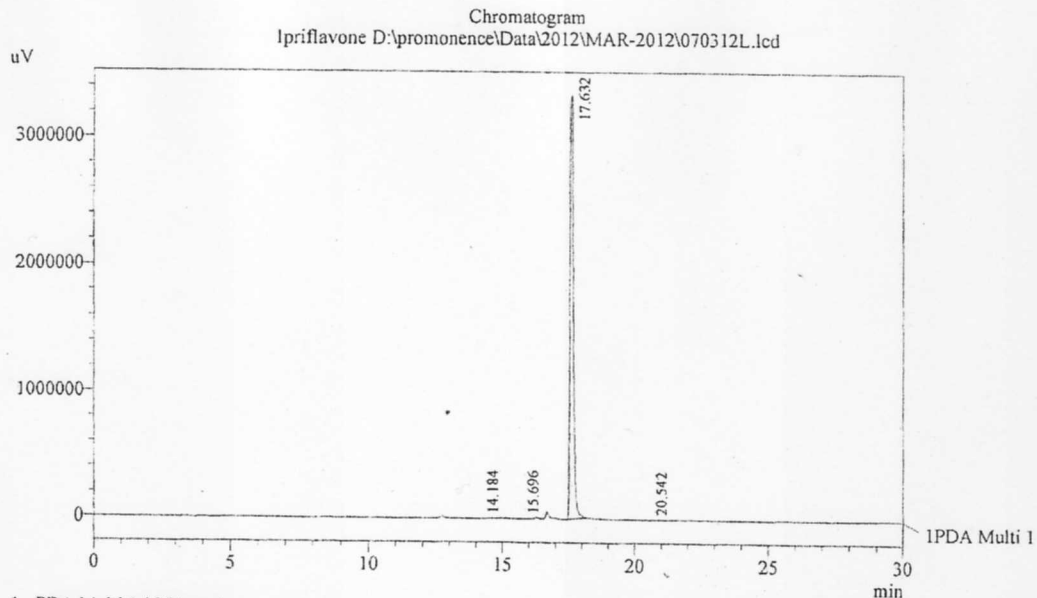
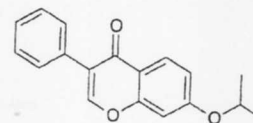
e-mail: [chemical@indofinechemical.com](mailto:chemical@indofinechemical.com)

## HPLC ANALYSIS

Acquired by : Sanjeev  
Sample Name : Ipriflavone  
Sample ID : Lot No:-0804014  
Injection Volume : 20 uL  
Data Filename : 070312L.lcd  
Method Filename : Linear Gradient.M.lcm

Catalog No.: 021328  
Product name: Ipriflavone  
Lot No.: 0804014

Date Acquired : 3/7/2012 4:52:35 PM  
Date Processed : 3/7/2012 5:40:20 PM  
Column : LUNA C-18(2), (250mm x4.6mm 5.0μ)  
Flow : 1.000 mL/min.  
Mobile Phase : A(20% of 0.05% TFA in water) B(80% of Acetonitrile)



1 PDA Multi 1 / 254nm 4nm

PeakTable

| Peak# | Name      | Ret. Time | Area     | Area % | Relative Retention Time |
|-------|-----------|-----------|----------|--------|-------------------------|
| 1     | RT:14.184 | 14.184    | 19330    | 0.06   | 0.80                    |
| 2     | RT:15.696 | 15.696    | 13857    | 0.04   | 0.89                    |
| 3     | RT:17.632 | 17.632    | 31365404 | 99.87  | 1.00                    |
| 4     | RT:20.542 | 20.542    | 7103     | 0.02   | 1.17                    |
| Total |           |           | 31405695 | 100.00 |                         |



# INDOFINE Chemical Company, Inc.

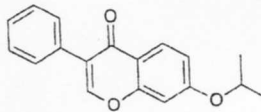
121 Stryker Lane, Bldg. 30, Suite 1 • Hillsborough, NJ 08844 • U.S.A.

Phone: (908) 359-6778 • FAX: (908) 359-1179

website: [www.indofinechemical.com](http://www.indofinechemical.com)

e-mail: [chemical@indofinechemical.com](mailto:chemical@indofinechemical.com)

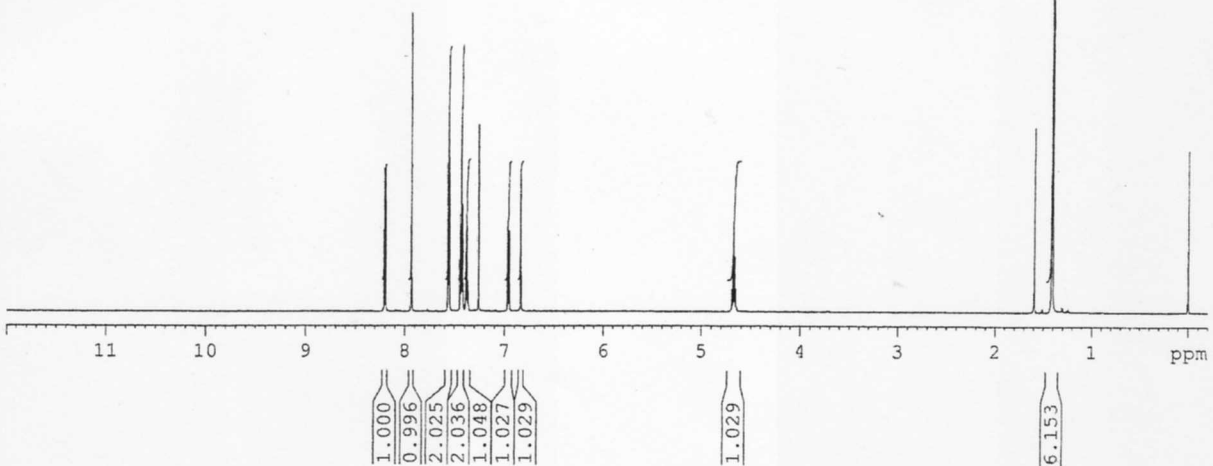
Catalog No.: 021328  
Product name: Ipriflavone  
Lot No.: 0804014



SOLVENT CDC13  
NS 32  
DS 0  
SWH 10416.667 Hz  
FIDRES 0.361138 Hz  
AQ 1.3845620 sec  
RG 812  
DW 48.000 usec  
DE 6.00 usec  
TE 298.2 K  
D1 1.50000000 sec  
TD0 1

----- CHANNEL f1 -----  
NUC1 1H  
F1 8.30 usec  
PL1 -1.00 dB  
PL1W 15.17893314 W  
SFO1 600.3347614 MHz

F2 - Processing parameters  
SI 32768  
SF 600.3300158 MHz  
WDW EM  
SSB 0  
LB 0.30 Hz  
GB 0  
FC 1.00





# INDOFINE Chemical Company, Inc.

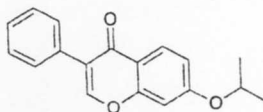
121 Stryker Lane, Bldg. 30, Suite 1 • Hillsborough, NJ 08844 • U.S.A.

Phone: (908) 359-6778 • FAX: (908) 359-1179

website: [www.indofinechemical.com](http://www.indofinechemical.com)

e-mail: [chemical@indofinechemical.com](mailto:chemical@indofinechemical.com)

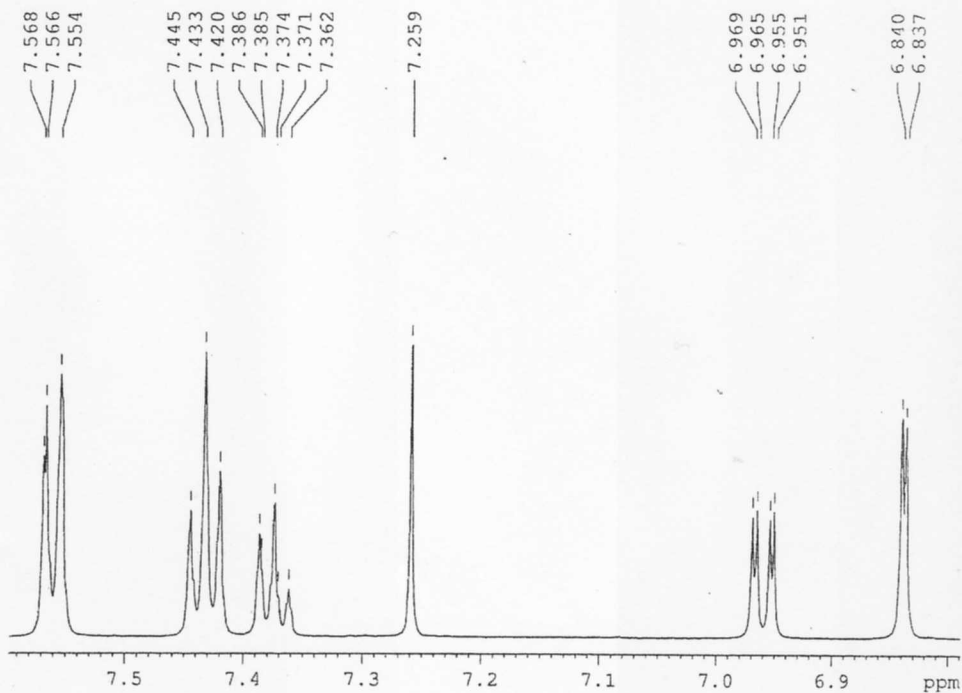
Catalog No.: 021328  
Product name: Ipriflavone  
Lot No.: 0804014



ICC-06 March  
1H IN CDCL3  
AVANCE-600i

SOLVENT CDCL3  
NS 32  
DS 0  
SWH 10416.667 Hz  
FIDRES 0.361138 Hz  
AQ 1.3845620 sec  
RG 812  
DW 48.000 usec  
DE 6.00 usec  
TE 298.2 K  
D1 1.50000000 sec  
TDO 1

===== CHANNEL f1 =====  
NUC1 1H  
P1 8.30 usec  
PL1 -1.00 dB  
PL1W 15.17893314 W  
SFO1 600.3347614 MHz  
F2 - Processing parameters  
SI 32768  
SF 600.3300158 MHz  
WDW EM  
SSB 0  
LB 0.30 Hz  
GB 0  
FC 1.00





# INDOFINE Chemical Company, Inc.

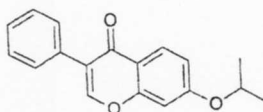
121 Stryker Lane, Bldg. 30, Suite 1 • Hillsborough, NJ 08844 • U.S.A.

Phone: (908) 359-6778 • FAX: (908) 359-1179

website: [www.indofinechemical.com](http://www.indofinechemical.com)

e-mail: [chemical@indofinechemical.com](mailto:chemical@indofinechemical.com)

Catalog No.: 021328  
Product name: Ipriflavone  
Lot No.: 0804014



SOLVENT CDCL3  
NS 32  
DS 0  
SWH 10416.667 Hz  
FIDRES 0.361138 Hz  
AQ 1.3845620 sec  
RG 812  
DW 48.000 usec  
DE 6.00 usec  
TE 298.2 K  
D1 1.50000000 sec  
TD0 1

ICC-06 March  
1H IN CDCL3  
AVANCE-600i

----- CHANNEL f1 -----  
NUC1 1H  
P1 8.30 usec  
PL1 -1.00 dB  
PL1W 15.17893314 W  
SFO1 600.3547614 MHz

F2 - Processing parameters  
SI 32768  
SF 600.3300158 MHz  
WDW EM  
SSE 0  
LB 0.30 Hz  
GB 0  
PC 1.00

